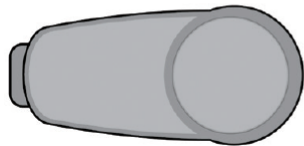
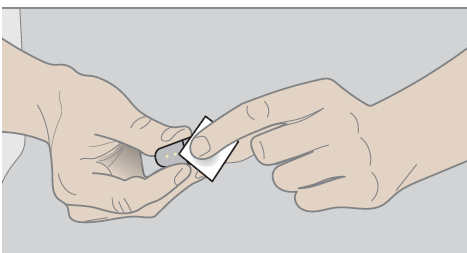




Attaching Dexcom G6 Transmitter



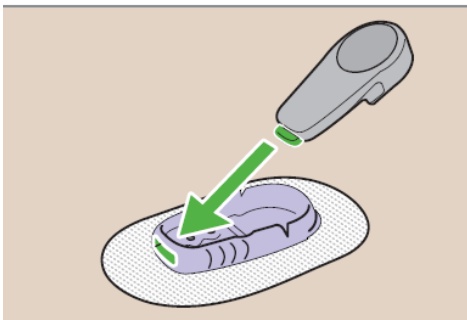
Step 1: Remove transmitter from box



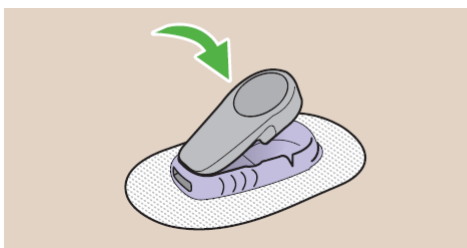
Step 2: Wipe bottom of transmitter with alcohol wipe. Let dry.

Be careful with the bottom of the transmitter. Don't:

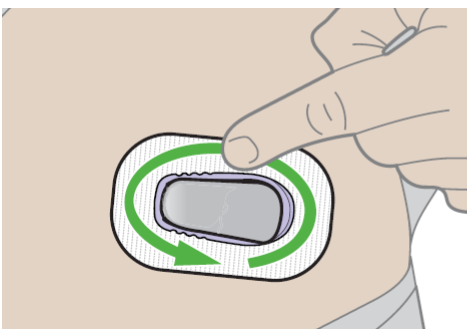
- Touch its metal dots



- **Step 3:** Slide transmitter tab into the slot at the narrow end of the holder.



- **Step 4:** Press the wide end of the transmitter until it “clicks” into the holder.



- **Step 5:** Secure by rubbing fingers around the patch 3 times.