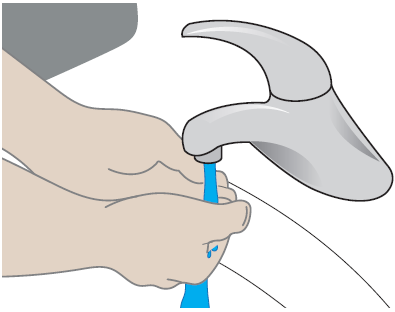
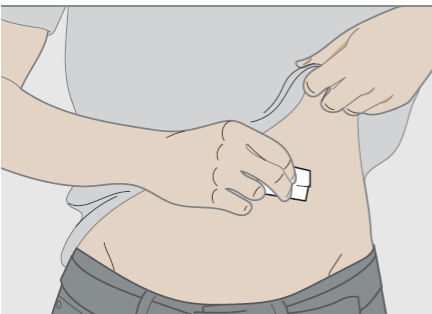




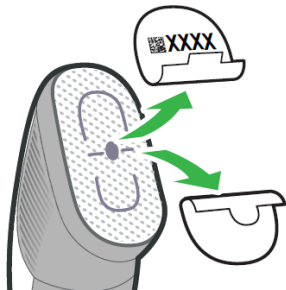
Dexcom G6 Sensor Placement



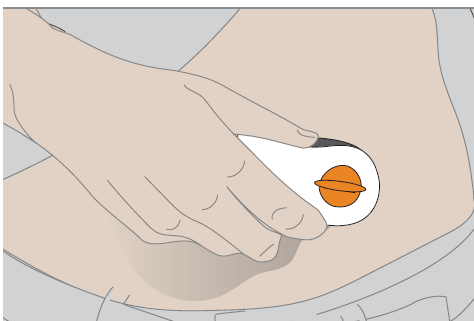
Step 1: Wash hands prior to sensor placement



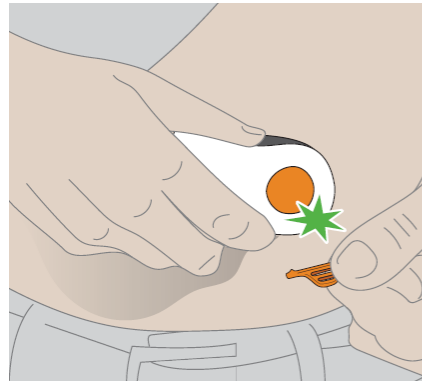
Step 2: Clean insertion site with alcohol. Let dry.



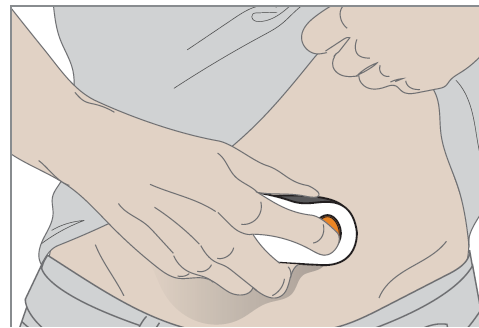
Step 3: Pull off both adhesive labels. **Keep the tab with the sensor code.** Don't touch adhesive.



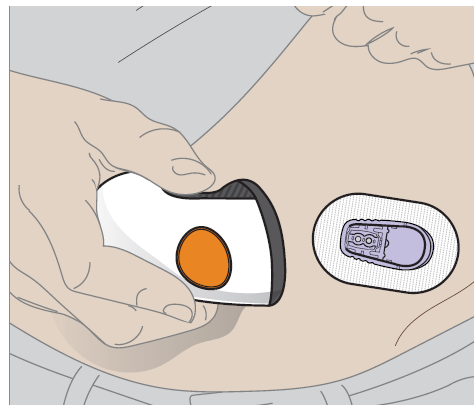
Step 4: Place applicator horizontally, not vertically, on skin. Firmly press down, sticking adhesive to your skin.



Step 5: Fold and break safety guard and throw it away.



Step 6: Push and release button to insert sensor.



Step 7: Remove applicator.