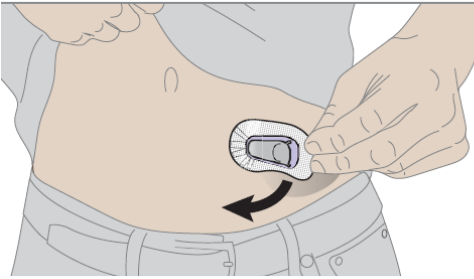




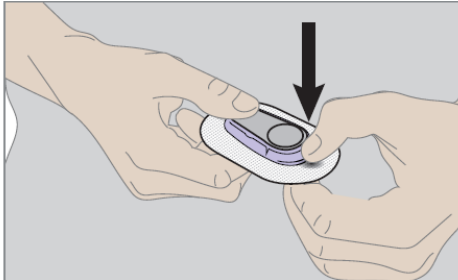
**DENVER  
HEALTH™**  
— est. 1860 —

# HUDDLE SHEET

## Removing Dexcom G6 Sensor & Transmitter

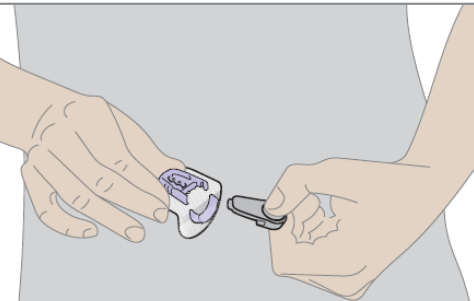


**Step 1:** Pull patch off like a band-aid. The transmitter and sensor all come off with the patch.



**Step 2:** Don't remove the transmitter until you've peeled the patch off the skin.

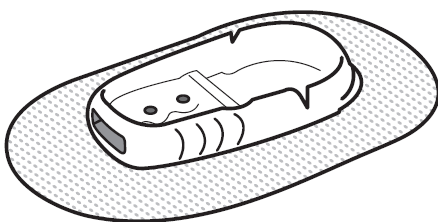
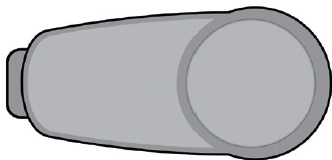
Grasp the wide rounded edge of the sensor holder (plastic ring). Bend the edge of the holder down (enough to break it) and it will release the transmitter.



**Step 3:** Pull transmitter straight out

**Step 4:** If putting a new sensor on the same patient, keep transmitter and use again.

**Do not use transmitter for more than one patient!**



**Step 5:** Throw away patch with holder and sensor. Follow unit guidelines for disposal of blood-contaminated devices.