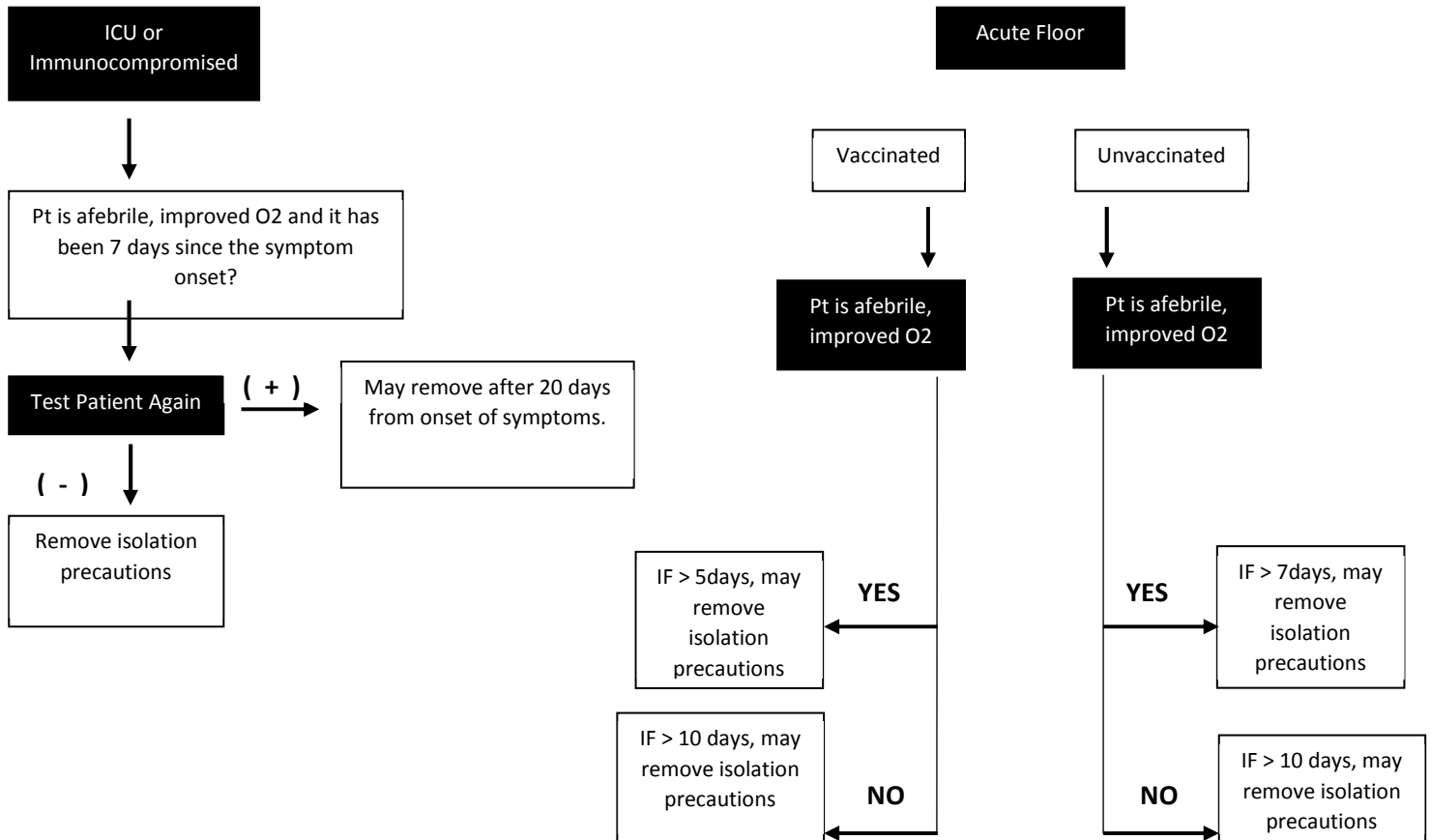


Isolation Precautions for Covid (+) Patients in the Hospital Setting

Note: This algorithm is only for patients who are improving in their clinical status, afebrile, improved oxygen requirements. Patients who are not showing clinical improvement would still need to isolate for up to the 20day maximum.

You have a patient that is Covid positive – how long should they be in isolation precautions?



Key Points:

Vaccinated Patient: - Has received all currently required vaccines in the series.

Isolation Days: - Required isolation days begin from the date of symptom onset. If the patient is unable to communicate or unable to remember the beginning date, please defer to the date of the positive Covid test.

When Isolation is removed: Patient's will be subject to all standard policies associated with non-Covid status, including visitors and transferring to units best suited for their medical needs.